

**2761 S Great Southwest Pkwy
Office Warehouse Available
Grand Prairie, TX**



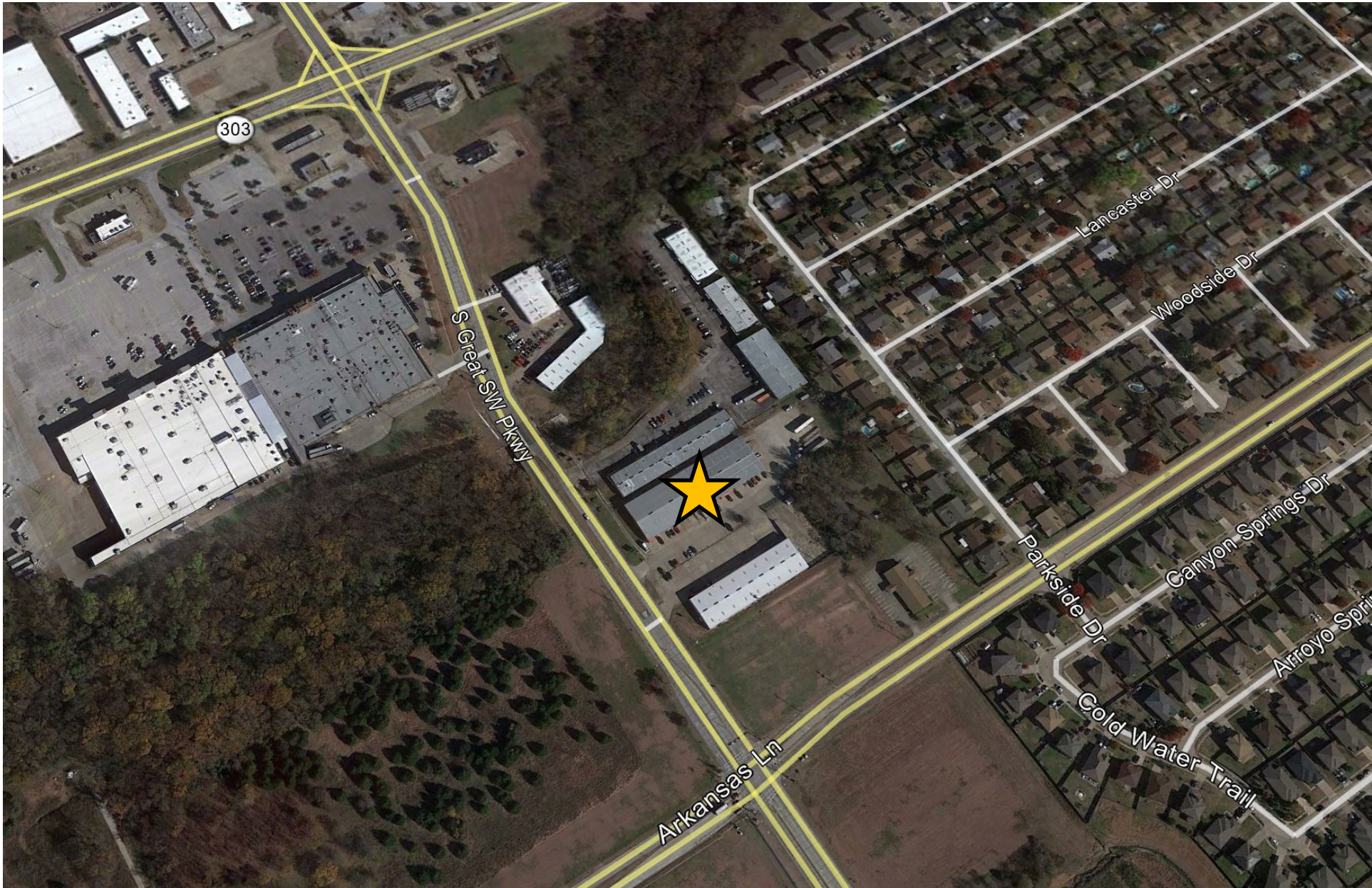
Warehouse Space Available | 2761 S Great Southwest Parkway, Texas

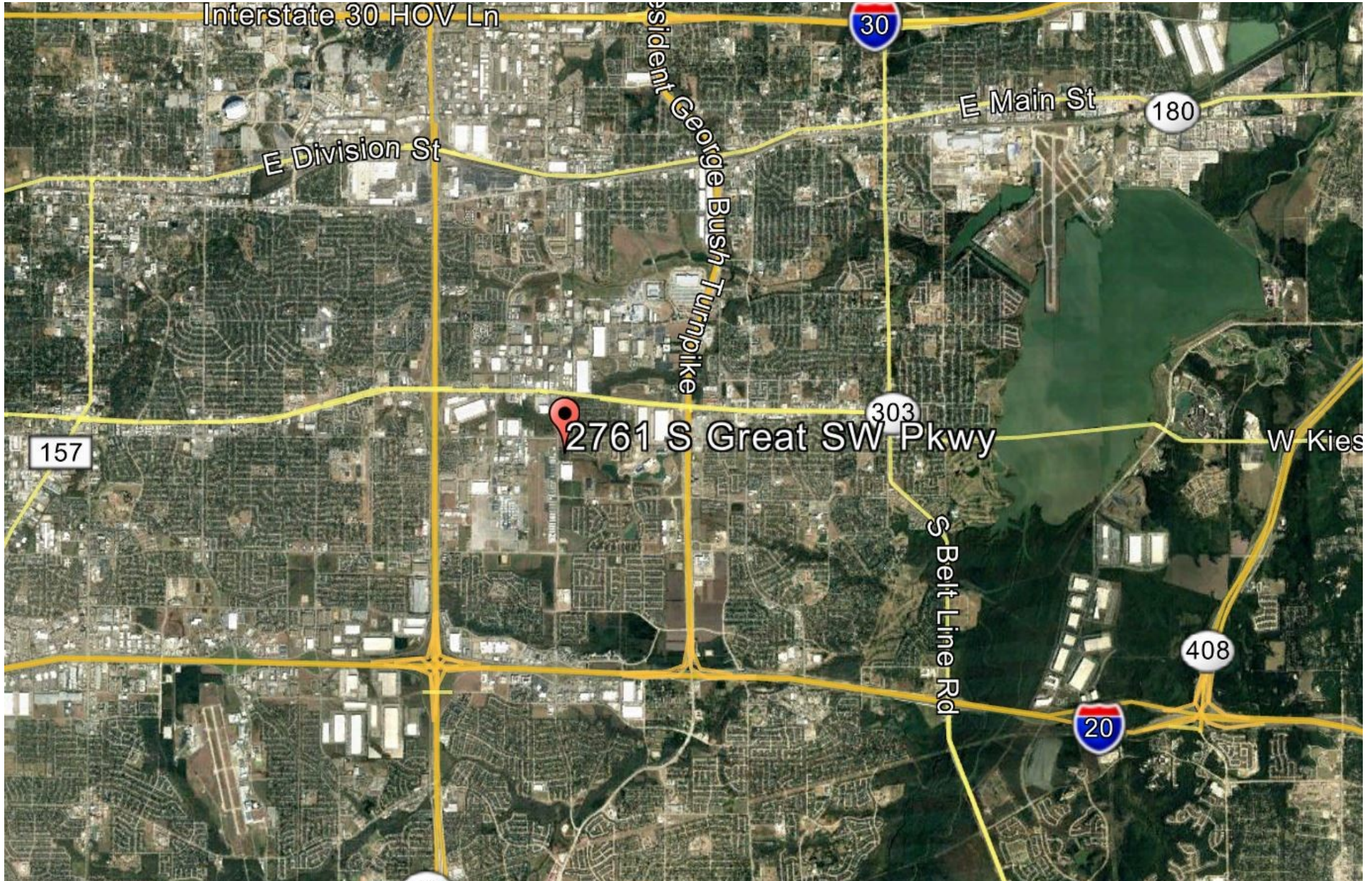
Property Details:

- Located on Great Southwest Parkway-End Cap Space
- +/- 7,500 SF
- Clear height is 18'
- Zoned LI- Light Industrial by City of Grand Prairie
- Approximately 1.6 miles from SH161, 1.3 miles from Hwy 360
- 1 Grade Level doors (12' x 10')
- 850+- Office space (2 Offices, 1 reception, 2 Restrooms)
- Three Phase Power
- Rate Starts at \$10.25/SF Gross









Interstate 30 HOV Ln

President George Bush Turnpike



E Main St



E Division St



2761 S Great SW Pkwy



W Kies

S Belt Line Rd

